

## Inspection Information

**Inspection Date:** 2025-12-24  
**Client Name:** [REDACTED]  
**Make:** Audi  
**VIN:** WAUBGAFLO [REDACTED]  
**Engine:** 6 cylinder  
**Interior Color:** Black

**Inspection Location:** Westminster, CO  
**Seller:** Private  
**Model:** S4  
**Body Style:** Sedan  
**Drive Type:** AWD  
**Exterior Color:** Black

**Year:** 2015  
**Mileage:** 93774  
**Transmission:** Automatic  
**Inspector:** David F

P = Pass F = Fail N = Not Equipped

P F N

### Exterior

- 1. Back-up Camera
- 2. Wiper Blades
- 3. Windshield Washer
- 4. Body Alignment
- 5. Scratches
- 6. Dings
- 7. Dents
- 8. Exterior Lights
- 9. Sunroof
- 10. Door Mirrors
- 11. Bumpers
- 12. Side Moldings
- 13. Frame
- 14. Body Seals
- 15. Rust
- 16. Paint Condition

### Glass

- 17. Windshield
- 18. Windows
- 19. Mirrors
- 20. Rear Window

### Interior

- 21. Seats
- 22. Headliner
- 23. Carpet
- 24. Door Panels
- 25. Glove Box
- 26. Vanity Mirrors
- 27. Interior Trim

P F N

### Interior

- 28. Dashboard
- 29. Dashboard Gauges
- 30. Air Conditioning
- 31. Heater
- 32. Cigarette Use / Odor

### Tires and Wheels

- 33. Condition of Tires
- 34. Condition of Wheels
- 35. Spare Tire

### Underbody

- 36. Frame
- 37. Exhaust System
- 38. Transmission
- 39. Drive Axle
- 40. Suspension
- 41. Brake System

### Underhood

- 42. Engine Compartment
- 43. Battery
- 44. Oil
- 45. Fluids
- 46. Wiring
- 47. Belts
- 48. Hoses

### Electrical System

- 49. Power Locks
- 50. Power Seats

P F N

### Electrical System

- 51. Power Steering
- 52. Power Windows
- 53. Power Mirrors
- 54. Audio System
- 55. Onboard Computer
- 56. Headlights
- 57. Taillights
- 58. Signal Lights
- 59. Brake Lights
- 60. Parking Lights

### Mechanical Function Test

- 61. Starting
- 62. Idle
- 63. Throttle Response
- 64. Gear Engagement (P / R / N / D)
- 65. Steering Wheel Play
- 66. Brake Pedal

### Bidirectional Scan

- 67. Codes Present

### Additional Notes

68. Notes:

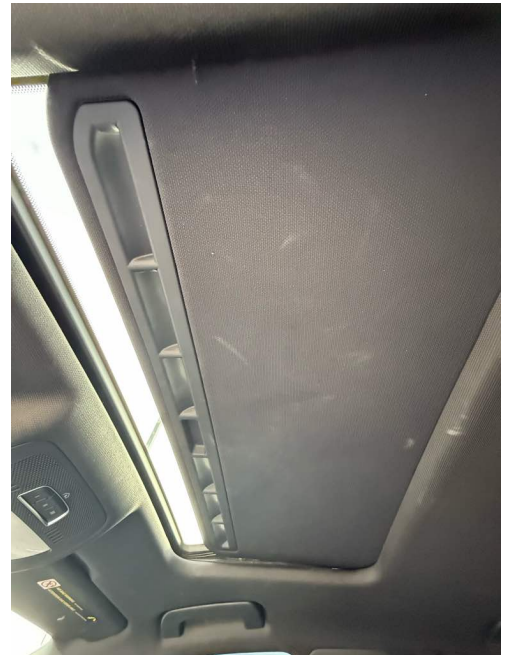
---

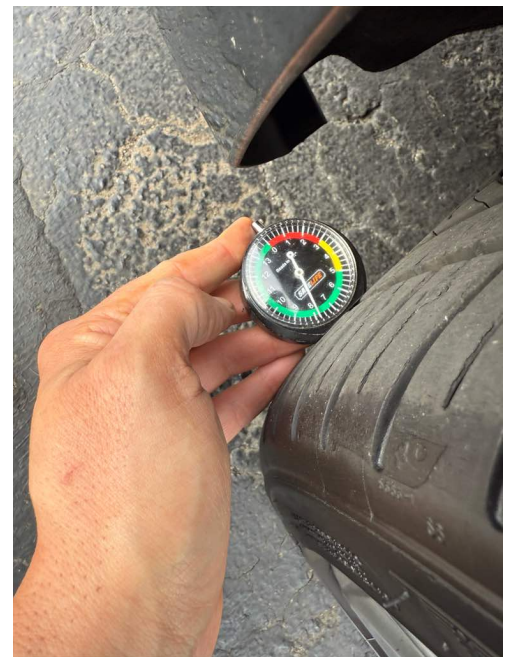
## Comments

---

- 5. **Scratches** Passenger side fender has very light scratches big light scratch on passenger side door and rear passenger side door front bumper on the lower driver side has scratches as well
- 9. **Sunroof** Sunroof cover broke
- 11. **Bumpers** Front bumper driver side is off of alignment
- 16. **Paint Condition** Multiple scratches and ding on trunk
- 27. **Interior Trim** Missing volume knob
- 43. **Battery** Alternator showing in high voltage
- 67. **Codes Present** See report

## Pictures









# Diagnostic History

The Report is created by **LAUNCH X-431**

## Vehicle Information

License #:  
Year:2015  
Make:Audi  
Model:S4 quattro Premium Plus  
VIN:WAUBGAFL0FA063403  
Odometer:93771 miles  
Engine Size:2.995000L 6  
Test Time:2025-12-24 11:20:16AM  
Vehicle Software Version:V29.20  
Diagnostic Application Version:V1.00.005  
User Operation:Status Report

## DTC

DTC	Description	State
P052E00	PCV Regulator Valve Performance	Active/Static
P045600	EVAP Emission Contr. Sys. (Very Small Leak) - Leak Detected	Passive/Sporadic
00956	Key 2	Lower Limit Exceeded
00457	Vehicle Electrical System Control Module	Check DTC Memory
00714	Right Air Flap Motor For Center Vents	Upper Limit Exceeded
02258	Sender Unit, Garage Door Opener	No Signal/Communication
01229	Humidity Sensor, A/C System	Defective
01565	Luggage Compartment Lamp	Open Or Short To Ground
01524	Antenna For Telephone	Open Circuit

## VEHICLE INSPECTION SNAPSHOT

Vehicle: 2015 Audi S4 quattro Premium Plus

VIN: XXXXXXXXXXXXXXX

Mileage: ~93,800 miles

Inspection Date: 12/24/2025

Inspection Location: Westminster, CO

Inspector: David

---

### CONDITION RATINGS

Category	Rating
Exterior	★★★★☆
Interior	★★★★☆
Tires and Wheels	★★★★☆
Mechanical Condition (Static)	★★★★☆
Electrical Systems	★★☆☆☆

Star ratings reflect observed condition only at the time of inspection.

---

### INSPECTION OUTCOME SUMMARY

Based on a stationary inspection, the vehicle showed no visible structural damage. Multiple cosmetic issues, interior trim faults, and several active diagnostic faults were documented. Suspension, steering, and drivetrain components showed no visible signs of leakage, breakage, or abnormal wear during static inspection. Tire wear appeared usable with no visible alignment-related wear patterns noted.

---

## **OBSERVATIONS**

### **Exterior**

- Multiple scratches on passenger-side fender and doors
  - Scratches on lower front bumper driver side
  - Front bumper driver side out of alignment
  - Multiple scratches and small dings on trunk
  - Sunroof shade damaged
- 

### **Interior**

- Interior trim missing volume knob
  - Seats, carpets, and headliner otherwise intact
  - No cigarette odor noted
- 

### **Tires and Wheels**

- Tires show usable tread remaining
  - Wear patterns appear generally even
  - No visible sidewall damage observed
- 

### **Mechanical Condition (Static)**

- Engine started and idled normally
  - No visible fluid leaks observed
  - Suspension and axle components visually intact
  - Brake and steering components showed no visible defects
  - Alternator voltage reported high during inspection
-

## **Electrical Systems**

- Multiple electrical and sensor-related fault codes present
  - Climate system sensor fault recorded
  - Infotainment-related faults present
- 

## **DIAGNOSTIC INFORMATION (KEY ITEMS)**

P052E00 – PCV Regulator Valve Performance (Active/Static)

Common on Audi 3.0T engines. Typically requires PCV assembly replacement.

P045600 – EVAP System Very Small Leak (Passive/Sporadic)

Often caused by gas cap, EVAP valve, or minor hose leak.

01229 – A/C Humidity Sensor Defective

Can affect automatic climate control operation.

00714 – Right Air Flap Motor Upper Limit Exceeded

Related to HVAC vent motor operation.

Multiple communication and accessory-related faults

Including key recognition, trunk lamp circuit, and antenna circuit.

---

## **MARKET VALUE REFERENCE**

Private Party Value Range: \$12,468 – \$14,888

Displayed Private Party Value: \$13,678

Mileage Basis: ~93,600 miles

ZIP Code: 80234

Value Date: 12/24/2025

---

### **ESTIMATED REPAIR COSTS (LOW-COST / INDEPENDENT SHOPS)**

PCV Valve Assembly Replacement:

\$900 – \$1,400

EVAP System Repair (Minor Leak):

\$150 – \$400

Sunroof Shade Repair:

\$300 – \$700

Front Bumper Realignment:

\$150 – \$300

Interior Trim Repair (Volume Knob):

\$50 – \$150

HVAC Sensor / Vent Motor Repairs:

\$300 – \$700

Estimated Combined Repair Range:

\$1,850 – \$3,650

---

**TARGET PURCHASE PRICE RANGE**

Suggested Purchase Range: \$9,000 – \$10,500

Range reflects private party market value adjusted for documented cosmetic damage, active mechanical faults, and anticipated near-term repair costs.

---